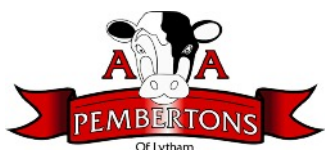




WREA GREEN HORTICULTURAL SOCIETY

SHOW 2019



**Saturday 7th September
at Wrea Green Institute**

OFFICIAL SHOW BROCHURE



Covering the North West

The North West's
leading roofing
merchant

CUPA PIZARRAS
The world leader in natural slate


Redland

CEDRAL
Timelessly beautiful facades

KLÖBER


IKO
Setting the Standard


MarleyEternit

- Importers of Cupa Spanish natural slate
- Extensive stocks of all pitched and flat roofing materials
- Insulation, PVC Roofline and roof windows
- Delivery service covering the North West and beyond
- Free estimating and specification service available



www.northwestroofingsupplies.co.uk

On with the Show – Year Four!

This year's Wrea Green Show will once again be held in the marquee on the Institute carpark on **Saturday 7th September**.

Fingers crossed for another sunny show.

The show wouldn't happen without you. It is the display of all of your talents that makes it such a lovely event. As we requested, we had more floral art arrangements last year, but were a little down on the bedrock of village shows, jams and pickles. Come on, get those cauldrons bubbling!

Just a reminder that exhibitors must live in the village, or surrounding area, be a member of the Institute or attend the village school.

We have changed some of the items on the schedule to keep things

interesting. We took on board the many requests in the suggestion box for chocolate cake to be included. The full schedule, along with brief hints on what the judges are looking for, can be found on the centre pages of this brochure and also on the show website.



Thank you so much for all of the support from our many sponsors who have advertised in the brochure, sponsored the exhibition classes, beer casks and festival glasses.

Thank you too to those of you who supported our fund-raising events; the Christmas hamper, Six Nations Rugby and Pemberton's Meat raffles, the curry evening and the Felting workshop – thank you! We couldn't do it without you.

TIMETABLE OF EVENTS

Friday 6th September

12 noon Beer Festival opens
6.00pm John Brindley (live music)

Saturday 7th September

9.00am Staging of exhibits
11.30am Judging
12 noon Beer Festival opens
1.00pm Show opens to public
1.00pm History exhibition
4.00pm Show closes
9.00pm The Coustics (live music)

Sunday 8th September

12 noon Beer Festival opens
3pm-5pm Teddy Bears' Picnic and The Bad Mamma Jammers Jazz Band in the marquee
5.00pm Cartwright (live music)

This year we have decided to use the marquee on the Sunday too; an afternoon Teddy Bears' Picnic with a live jazz band. More details on the Show Attractions page.

This year's beer festival will start at 12 noon on **Friday 6th September** and will run over three days with live music each day. Once again we are grateful to Pemberton's for sponsoring the pint glasses.

Finally, a big thanks to our hardworking committee for all that they do in organising the show.

J.E. Harrison, Builders, of Kirkham are the main sponsors of the Show for the fourth year running and we thank them for their generous support. We are looking forward to seeing you at the show and including many of your exhibits in the marquee. See you there!



The Wrea Green Horticultural Society is a non profit making organisation that was established in 2015 with the aim of staging an annual show.

Committee:

Jim Bretherton
Mags Bretherton
Alan Brindle
Tricia Cross
Dennis Halliday
John Kelso
Brian Lodge
Beth Maskell
Edwina Maskell
Vicki Rees
Andrew Sweeney

Associate members:

Helen Chappell
Tess Robinson

President and Founder:

Neil Withington

Show Secretary:

Vicki Rees
5 Stile Close
Kirkham PR4 2SF
07841335801

Chief Steward

David Rees

Website:

www.wreagreenshow.co.uk

e-mail:

info@wreagreenshow.co.uk

Bowker Motor Group

THE JOY IN THE JOURNEY



Bowker
Ribble Valley

New Porsche Centre now open.

Porsche Centre Preston.

Your brand new official Porsche Centre is located on Watery Lane, Preston. It offers the complete range of services for all your Porsche needs. Feel free to drop by or visit www.porschest Preston.co.uk for more details.



Porsche Centre Preston
Centenary House
Watery Lane, Preston
Lancashire PR2 1QJ
01772 911911
info@porschest Preston.co.uk
www.porschest Preston.co.uk
[/PorscheCentrePreston](https://www.facebook.com/PorscheCentrePreston)

High Class Catering

by Davina Parker



Home Cooked Food
for Any Occasion

Telephone: 01772 684545

Mobile: 07814 318 333

Email: davina@highclasscatering.co.uk

Web: www.highclasscatering.co.uk

Lancashire Chauffeur Services

*Executive Travel
Airport Transfers
Corporate Events
Tel: 07860 254405*



www.lancashirechauffeurservices.co.uk



Eastham Hall

Holiday Park

Escape to the peace and quiet of
the Lytham countryside...



**Holiday Homes For Sale
Nightly & Seasonal Touring**



01253 737907

www.easthamhall.co.uk

Saltcotes Road, Lytham, FY8 4LS

Show Rules

HOW TO ENTER

Firstly, complete an entry form and make sure that it reaches the Show Chairman together with your entry fee, **before the deadlines given in the rules.**

Exhibits in the **painting, (Class 33)** and **photography (Classes 41 – 45)** need to be taken to the Show Chairman **before 5pm on Thursday 29th August.** All other exhibits should be brought to the Show marquee at the rear of The Institute between **9am and 11.30am, on Saturday 7th September.**

When you arrive at the marquee, first collect your entry cards from the Society table. The card will have your name and entry number already on it. A Show Steward will show you where to place your exhibit and place it in the correct class as indicated by the class cards on the tables.

Make sure that your entry card is next to, or attached to, the relevant exhibit and placed **writing side down.**

Please leave the marquee as soon as you have placed your exhibits as this is busy time and space is at a premium. No exhibitors will be able to enter the marquee after 11.30am.

The Show will open at 1pm and close at 4pm.

The judges will attach a certificate to the entry card of winning exhibits indicating which prize has been won. Please take your certificate /entry card to the Society table to claim your prize.

All exhibits should be removed from the marquee between 4 - 5pm or they are likely to get eaten!

For further advice and hints on what the judges are looking for please go to the website at www.wreagreenshow.co.uk or contact the Show Chairman for a hard copy if you don't have t'internet access.

1. Each entry costs 50p except for the children's classes, which are free. Entries must be made on the Show Entry Form, which is enclosed with this brochure. Extra forms are also available from Wrea Green Institute or can be downloaded from www.wreagreenshow.co.uk
2. All entry forms, together with the correct fees, should reach Mrs Edwina Maskell, (Mandamus House, 10 Station Road, Wrea Green 01772683889) by **noon on Wednesday 4th September 2019** except for Class 32 (Animal Portrait) and Classes 41-45 (Photography). Entry forms, fees and the exhibits for these classes should reach Edwina not later than **5pm on Thursday 29th August 2019.**
Entry forms can be posted through the letterbox. There is no need to ring the bell unless you are delivering an exhibit.
3. All produce entered for competition must be grown in the competitor's own home, garden or allotment and to be cultivated by the competitor themselves. Any competitor found to be in breach of this rule will forfeit any prize money won and will be disqualified from entering future shows of the Society.
4. The Society will provide paper plates for exhibits where required but vases etc must be provided by the exhibitor themselves. The Society will accept no responsibility for losses or damage.
5. An exhibitor may enter **TWO** exhibits in all classes with the exception of **Classes 23 to 31 (Culinary and Jams and Pickles)** where only **ONE** exhibit per class is permitted.
6. Classes are only open to exhibitors living within the village and the surrounding area or who are members of Wrea Green Institute or who attend the village school.
7. Two or more persons growing produce from the same garden/allotment may only make entries in the same class in their joint names, sharing prizes between them.
8. Judging begins at 11.30am on Show day. No competitor is permitted in the marquee whilst judging is taking place. The judges' decisions are final and the judges have the right not to award some or all of the prizes in a class if they feel that entries are not in accordance with the rules or entries are of insufficient quality.
9. Prize money shall be awarded as follows in each class: First £5, Second £3, Third £2. A big thank you to all our class sponsors for donating all of the prize money.
10. Exhibits should be removed from the marquee between 4pm - 5pm on Show day.

SUMMARY

**Entry forms and fees for Classes 33, and 41 to 45
submitted by 5pm Thursday 29.8.2019**

**All other class entries and fees
submitted by noon on Wednesday 4.9.2019**

The judging criteria for the show is based on the contents of 'The Horticultural Show Handbook' by the RHS and the Women's Institute book 'On With The Show'. Both of these publications can be bought through the Show website: www.wreagreenshow.co.uk



MW CONTRACTS

GROUNDWORK & CIVIL ENGINEERING

all aspects of
Groundwork
and Civil Engineering
covered in the North West

Telephone:
07931 755410

www.mwcontracts.uk.com



ROLAND L. WHITEHEAD AND DAUGHTER
FUNERAL DIRECTORS M.B.I.F.D., DIP.F.D., N.A.F.D.



The Old Lifeboat House | East Bank Road | St Annes | FY8 1ND

01253 780860

*To serve the community is a privilege
and a commitment*

www.rlwhiteheadfunerals.co.uk

roland.linrone@btinternet.com

nb
PROFESSIONAL
ULTIMATE IMAGE
SALON
PERFECT
PAMPER
TIME

TREAT YOURSELF TO ANY OF OUR ULTIMATE
TREATMENTS YOU DESERVE IT!

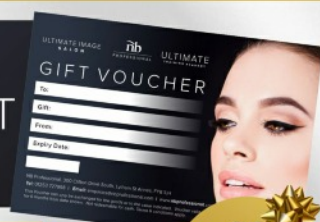
ENJOY A
SPECIAL TREAT
TOGETHER

GIFT VOUCHERS AVAILABLE

BOOK TODAY! T: 01253 727998

NB Professional, 300 Clifton Drive South, Lytham St Annes, FY8 1LH

www.nbprofessional.com



T'S & C'S APPLY.

divine signs Ltd

From inspiration... to completion!



- Vehicle Graphics ■ Vehicle Wrapping ■
- Window Graphics ■ Banners & A-Boards ■
- Shop Signage ■ LED Illuminated Signs ■
- Built Up & Flat Cut Letters ■
- CNC Router Manufacturing ■
- Large Format Digital Printing ■
- 4ft LOVE Letters For Hire ■



Give us a call to find out more!



Tel: 01772 930 467

www.divinesignsuk.co.uk · info@divinesignsuk.co.uk

Units 13 & 17 Brook Mill Ind Est, Wrea Green PR4 2PH

SHOW SUNDAY – TEDDY BEARS' PICNIC

Yes! We are going to do something with that big, empty marquee on the Sunday. We would like you to bring a picnic, and your Teddy, to the marquee between **3pm and 5pm on Sunday September 8th**, where



you can spread your picnic out on a rug, or use the display tables and chairs or, if fine, sit on the grassy hill by the car park. Why not accompany your picnic with some real ale from the Beer Fest or maybe a glass of prosecco from the bar. And . . . there will be music. We have booked a jazz band called **The Bad Mamma Jammers** who will provide a selection of swing, vintage and funky jazz to accompany your picnic. There may even be room for a bit of a bop! And, just to say thank you for all your support – it's free!

WIN A BANKSIAN MEDAL

As part of our affiliation to the RHS we are delighted to be able to present a Banksian Medal to the person winning the most prize money in the horticulture classes (numbers 1-18 inclusive). Well done to Dennis Halliday, our 2018 winner who will be unable to win the medal in 2019 or 2020, giving the rest of us a bit of a chance! But watch out; Ray Pickett, our first winner, will be back in the running next year, 2020.

Sir Joseph Banks was one of the founding fathers of the RHS in 1804 and a renowned botanist. He took part in Captain Cook's first great voyage and was responsible for establishing Kew Gardens as the world's leading botanical gardens.



GROW THE SHOW

The Show costs about £3000 to stage; the marquee, prize money, props and beer. All of this is paid for with your kind sponsorship, donations, brochure advertisements and our fund-raising events. If you have bought a raffle ticket, advertised in the brochure, sponsored a class or a cask, bought a Friend of the Show card, attended a curry evening, a BBQ or a felting workshop, then you have helped to stage this year's show. Well done and thank you!

Thinking ahead to 2020, you can help us raise money for next year's show by becoming a Friend of The Show. Once again, Trebaron Garden Centre on Common Edge Road in Blackpool, is kindly offering 10% discount on horticultural items to anyone with a Friend of the Show card. These are £10 and will be available at The Show and afterwards from the Chairman. The card is valid from Show Day, September 7th 2019 to Show Day September 5th 2020.

SHOW WEBSITE

The Show website provides a monthly factsheet to download with "showstopper" jobs for that month between March and August. The factsheet also contains detailed judging criteria for each class to help you along. These have been updated for 2019 to reflect changes to the schedule. The website also provides up-to-date information on all the Society's activities with news and reports on fundraising events, sponsorship opportunities and much more.

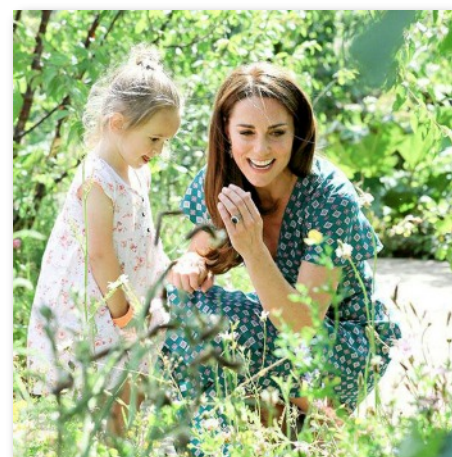
You can find the website at www.wreagreenshow.co.uk and we also have a Facebook page, so please like us to receive regular updates. For those without access to t'internet get in touch with the Secretary, Vicki Rees if you have any questions.

FURTHER HINTS FROM THE JUDGES

The most important thing for us is that as many of you as possible join in the fun and enter your exhibits. Our judging criteria is lenient so that everyone feels confident enough to have a go.

There are one or two classes where the 'rules is the rules' - classes 41 to 45, photography, must be no bigger than A4 including the mount. This is so we can fit them all onto the boards. (Talking of mounts, the photographs do look better with one, though it's not compulsory.)

Check out the judging criteria at www.wreagreenshow.co.uk so that you have every chance of seeing off the competition.



THE RHS

The Royal Horticultural Society is a UK charity established to share the best in gardening. The aim is to enrich everyone's life through plants, and make the UK a greener and more beautiful place.

Founded in 1804, it promotes horticulture through flower shows such as the RHS Chelsea Flower Show, Hampton Court Palace Flower Show, RHS Tatton Park Flower Show and RHS Cardiff Flower Show. It also supports training for professional and amateur gardeners.

As an affiliated society, we are able to draw on the support and advice that is available from the largest network of gardening clubs in the UK.

The RHS website is a great resource for new and experienced gardeners alike. www.rhs.org.uk

Schedule

VEGETABLES & FRUIT		hints from the judges	class sponsored by:
1.	Six Tomatoes on a plate	uniform shape, ripe but firm, blemish free	North West Roofing
2.	Nine Cherry Tomatoes	uniform shape/size, fresh calyx attached	North West Roofing
3.	Two Marrows	not over ripe, well shaped, tender, any colour	Neil and Bev Gleghorn
4.	Three carrots with tops	uniform shape, bright colour, tops trimmed	Dennis and Jan Halliday
5.	Four Potatoes	clear, unscrubbed skins, blemish free, few eyes	David Hargreaves Farms
6.	Three Onions	uniform bulbs, firm, tied tops	James Bretherton AgScope
7.	Two Leeks	firm, undamaged leaves, roots uncut soil washed	North West Roofing
8.	Four Runner Beans	straight, stalks attached, crisp snap when broken	James Bretherton AgScope
9.	Three Apples	do not polish, unblemished skin, stalk intact	Gary Guile
10.	Three Parsnips	well-developed, taproot intact, leaves trimmed	Janet Parker
11.	Three Courgettes	young, tender, approx 15cm long	Karen Hope
12.	Growing Pot of Herbs	minimum of five healthy herbs	Elizabeth Willox
13.	Harvest Basket	mixture of healthy home-grown produce	James Bretherton AgScope
13a.	Ugly Vegetable	home grown	Ian Wood
FLOWERS		hints from the judges	class sponsored by:
14.	Single Bloom (any)	leaves below water line removed	The Lewis family
15.	Jug of home-grown flowers	annuals, perennials or both. Fresh	Robyn Lodge
16.	Vase of mixed Dahlias	all florets intact without blemish	Doreen Knight
17.	Vase of Sweet Peas	15 spikes maximum, long straight stems	Linda Wood
18.	Vase of mixed Roses	straight stems, undamaged foliage	David Hargreaves Farms
FLORAL ART		hints from the judges	class sponsored by:
19.	Just Green Arrangement	flowers and Foliage all shades of green	Jackie and Gav Smith
20.	Arrangement in a tea pot	good colour harmony between flowers and teapot	Elizabeth Willox
21.	Seaside Arrangement	colours and props reflect the seaside	Steve and Kath Millward
22.	Floral Hat	a hat-shaped arrangement or flowers in/on a hat	Ross Etchells
CULINARY		hints from the judges	class sponsored by:
23.	Chocolate Cake	sides smooth; icing rich and glossy	Ribby-with-Wrea WI
24.	Afternoon Tea for two	4 savouries and 3 sweet items per person	Jenna Lodge
25.	Savoury Pie	a firm pastry encasing the whole pie; out of tin	Brian Lodge
26.	Millionaire's Shortbread	3 distinct layers. Soft caramel, not toffee	Gary Guile
27.	Parkin	texture close and crumbly. Distinct ginger flavour	Dtec International

Schedule

JAMS and CHUTNEYS		hints from the judges	class sponsored by:
28.	One jar of Chutney	'hot' or 'mild' on label, mature flavour	Gillian Delrue
29.	One jar Marmalade	citrus fruit based, any flavour additions on label	Gary Guile
30.	One jar Blackcurrant Jam	colour bright, even, characteristic of blackcurrants	Ribby-with-Wrea WI
31.	One jar Fruit Curd	date made on label, 4 week 'eat by' period	Alan Brindle
ART and CRAFT		hints from the judges	class sponsored by:
32.	Animal portrait any medium	any medium, signature to be covered, A3 max size	Gerry Johnson
33.	Greetings Card	well-finished hand-made rather than home-made	Hilary Cunliffe
34.	Up-Cycled item	any used or old item that has been re-purposed	Richard and Tricia Cross
35.	Mosaic	finished surface smooth without rough edges	Beth Maskell
NEEDLECRAFT		hints from the judges	class sponsored by:
36.	Scarecrow	maximum height 1m. Supported on pole	W. Gummage
37.	Needle-felting	3D woollen object created by the stabbing technique	Edwina Maskell
38.	Cross Stitch Item or Picture	no size limit, no trailing threads	Robbie Price
39.	Bunting	up to 20 pennants. Neat hand or machine stitching	Linda Brindle
40.	Knitted Item	complexity and workmanship taken into account	Ribby-with-Wrea WI
AMATEUR PHOTOGRAPHY		hints from the judges	class sponsored by:
41.	Humour	up to A4 including mount, unframed	Peter Kay
42.	Danger	up to A4 including mount, unframed	Caroline Wareing
43.	Blue	up to A4 including mount, unframed	Dtec International
44.	The Fylde	up to A4 including mount, unframed	Gary Guile
45.	People	up to A4 including mount, unframed	Kay Kay
CHILDREN'S CLASSES		hints from the judges	7 years & below sponsor: 8 to 11 years:
46.	Miniature Beach in a Box	in seed tray or similar	Ross Etchells Gary Guile
47.	Flowers in a Jug	fresh flowers and leaves	Dipesh and VB Spar Sheila Swindells
48.	Fairy garden in a jam jar	clean jar	Gladys Lodge Ribby-with-Wrea WI
49.	Recycled plastic model	must be able to stand	Ribby Scholl PTFA Ribby School PTFA
50.	Painting/Drawing Wrea Green	up to A3 signed on back	Ribby-with-Wrea WI Steve & Caroline Taylor

For more detailed criteria as well as handy hints on each class, please see the Show website at
www.wreagreenshow.co.uk

Printed copies are available from the Show Secretary on request.

Wrea Green Holiday Cottage



Email:
Mccartney766@gmail.com

Tel 07514281910

Westair
Experience you can depend on



learn to fly with
Westair Flying School

Trial Flying Lessons
Popular Half Day Flying Experience

ideal as gifts

quality instruction

www.westair.co.uk

Telephone: 01253 342660



**Free Local Delivery
Around the Fylde Coast**

**KILN DRIED HARDWOOD NETTED LOGS
BARN SEASONED HARDWOOD NETTED LOGS
BUILDERS BAG KILN DRIED HARDWOOD LOGS
BUILDERS BAG SOFTWOOD LOGS
BARN SEASONED BUILDERS BAG HARDWOOD LOGS
CUBIC METRE KILN DRIED HARDWOOD LOGS
CUBIC METRE BARN SEASONED HARDWOOD LOGS**

CONTACT 07817220307

email us: ribble-@outlook.com or visit us: www.ribblelogs.co.uk

CHRISTMAS CARDS



This rare snowy picture of the church was a prize-winner at last year's Show and has now been turned into an attractive Christmas card.

Measuring 21cm x 15cm (A5) and printed on thick card, packs of six cards with envelopes will be on sale at the 2019 Show at a cost of just £5 with proceeds going towards the cost of staging the 2020 Show.

HISTORY EXHIBITION



The Village History exhibitions that we have had at previous Shows have proved to be extremely popular.

We have been indebted to Richard Lancaster for bringing part of his collection of old Wrea Green photographs and archives along for everyone to see.

What Richard doesn't know about the village's past isn't worth knowing, so please make sure you take some time to look at the display at this year's Show and have a chat with Richard about Wrea Green in bygone times.



THE DUCK TRAIL

Once again you did the village proud in 2018 with your 40+ Duck Trail entries. One villager counted the 'duck-trailers' walking past his house on the Saturday afternoon – 100! Fantastic!

This year we have a theme - **FILMS**. Just think of any film or film title where you can adapt the title to one containing the word duck or a duck-related word. There are obvious ones such as The Marx Brothers' Duck Soup – but you can think of less obvious ones, we're sure. The Duckfather; Batduck and Duckin; Field of Ducks; Frozen Duck; Alfred Hitchduck..... (just Google the Top 500 Films and have a go!).

The prizes are 1st - £20, 2nd - £10 and 3rd - £5. There is also a magnificent trophy! (Well, we think so!)

A big thank you to **Dizzy Ducks Tea Rooms** for sponsoring this year's Duck Trail

This year's Duck Trail is being organised by the wonderful Bretherton sisters, Ruth and Anna. Please let

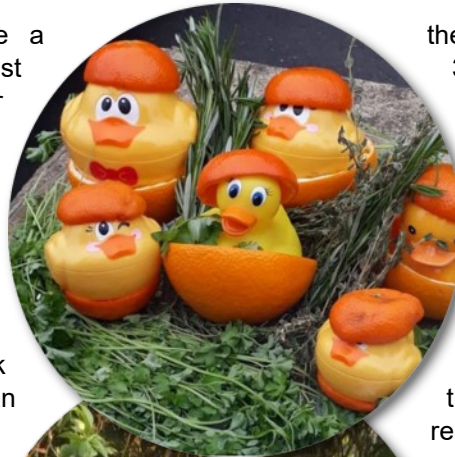
them know by **Friday 30th August** if you are going to take part. This is so that they can place your entry onto a map which will be available on show day, or to download earlier in the week. You will receive a number card to attach to your display. Place your duck display in your front garden, or outside of your business premises, **on Saturday 7th and Sunday 8th September.**

Contact Ruth and Anna on

james@agscope.co.uk
or **01772 685677**

Duck Trail Judging

This year, the judging will be done by everyone who walks the trail. The maps will have a space in which each entry can be scored out of 10. The scores will be added up on the Sunday evening and the winners announced soon afterwards.



DIZZY Ducks of Wrea Green

1 Station Road • Wrea Green • Preston • PR4 2PH
Tel: 01772 468675
Email: dizzyducksofwreagreen@yahoo.co.uk

ALWAYS A SIGN OF GOOD TASTE

Even if the body isn't that great

hellewell^h
menswear

6 LUNE STREET PRESTON PR1 2NL T: 01772 252099 WWW.HELLEWELLS.CO.UK

For Prompt Professional Service

PRESTON

7-9 Station Road
Hesketh Bank
Preston,
Lancs., PR4 6SN

Tel: 01772 812163

Fax: 01772 814411

BLACKBURN

440 Whalley New Road
Roe Lee
Blackburn,
Lancs., BB1 9SL

Tel: 01254 662352

Fax: 01254 51156

SOUTHPORT

Eldon Court
Hoghton Street
Southport,
Merseyside, PR9 0NS

Tel: 01704 500053

Fax: 01704 536311



ACCOUNTANTS
LIMITED

Chartered Accountants & Registered Auditors

email: clees@tllaccountants.com

www.tllaccountants.com

D P Lucas FCA DChA
C M Lees BA(Hons) ACA FCCA
P Buck ACA DChA



Beer Festival

CASK SPONSORS

1. North West Roofing
2. Brian Lodge
3. Jo & Gary Guile
4. Cllr John Maskell
5. Realtime UK
6. D.tec International
7. Wrea Green Institute
8. Roland Whitehead & Daughter
9. TLL Accountants
10. Hydration Station
11. Eastham Hall
12. Ribble Logs
13. Thom, Toni & Sally
14. Pam Wensley
15. Divine Signs
16. Ian & Linda Wood
17. Ross Etchells
18. Ramzi Ben-Halim
19. HB Panelcraft
20. Wareing Buildings
21. The Grapes
22. Hellewells Menswear
23. MW Contracts
24. W&C, The Gents
25. Waltons

The fourth Institute Beer Festival will start at 12 noon on Friday 6th September with 25 real ales available in the function room with the usual core range on sale in the main bar. Watch out for the new look Cider Corner in the function room.

We will be operating a 'token' system with each token worth half a pint. Simply buy the number of tokens that you require and then exchange them for your choice of ale. At the time of going to print, the final line up of real ales had yet to be determined but full tasting notes will be available at the event and on the show website prior to the Show

Please remember that demand for certain ales will be high and once it's supped, it's supped as further casks of many of the ales will not be available. The Festival will continue on Saturday and Sunday.

We hope you enjoy the range of ales that we have selected but please remember to drink responsibly.



SOUVENIR SHOW GLASSES

We are most grateful to **Pemberton's Dairies** for again sponsoring the Show pint pots.

The 'Conical' style of glass has been etched with logos for the Show as well as Pemberton's and makes the ideal souvenir of the event. It has a 'half pint' line marking on it so that you don't have to have a pint of any particular beer, unless you want to of course!

CASK SPONSORS

We are very grateful to all of our cask sponsors (listed on the left) for their generosity. Thank you all for your support.





Lytham FY8 4NL
pembertonfarmshop.co.uk
01253 737400

Buy Local

Butchers | Dairy | Groceries
& Pems Pantry

Open 7 days a week | Car Parking available | Plus our famous Highland Cows

 Find us on
Facebook

 Subscribe to our YouTube Channel
Search - Tom Pemberton Farm Life

 The European
Agricultural Fund
for Rural
Development:
Europe investing in
rural areas

Show Attractions

Once again this year we have invited some great local crafts people and artists to bring their creations to the show. There will be a variety of lovely things to buy, from bunches of sweet peas to paintings and wooden crafts.

Ribby-with-Wrea WI

The WI will have their table inside the marquee selling cakes, garden produce and handicrafts.

Ribby-with-Wrea School PTFA

The PTFA will be proving drinks and light refreshments during the Show.

Julie Roberts

Wrea Green's multi-talented craftswoman will be on hand to explain the intricacies of weaving, crochet, or whatever new endeavour she is exploring this year. She will have something for the children to try, too.

Face Play

This popular face-painting stall will be on hand to turn your little ones into monsters, tigers, clowns and lots more! This stall is weather-dependent – as rain and face paint don't mix! (Well, they do – but not in a way you'd be happy with!).

Cathy's Quirky Paintings

Cathy will be bringing a huge selection of her quirky and funny paintings. And, if you buy a raffle ticket, you may even win one of them to take home.

Acorn Woodcraft

There will be a demonstration of bespoke, chainsaw carved garden sculptures by James Shellikar. You can order one at the show.

BeckaBoo Wooden Gifts

Rebecca will be bringing her lovely stall, full of tempting gifts made from wood and metal.

Tropic Skincare

This is a range of truly ethical beauty products. They are vegan, carbon-neutral and cruelty free.

Fibre Crafts

Sue Humphreys is an enthusiastic craftswoman with a passion for woolly things. There will certainly be some exciting gifts to buy.

Flora and Fauna

Joanna Whittaker is a flower farmer and florist. She will be selling her organic, seasonal English flowers at the show. Look out for her new flower farm at Springfield Farm, Moss Side Lane, Wrea Green.

Turquoise Strawberry Design

Fun and quirky applique clothing and accessories for little humans. Ready-made or custom made to order.

Blenheim Candles with Geraldine

Luxurious 100% soya candles and melts. Diffusers and car fresheners.

Pemberton's Farm Shop

Pemberton's will be firing up their fantastic BBQ from **4pm on Saturday**. They will also be selling a selection of their meats for you to take home.

There are great prizes in our Show Day DIY Raffle. On the day, just pop £1 in the envelope provided.

Put your name and phone number on the envelope for a chance to win a Cathy Daniels painting; a £100 voucher for a flying lesson or pleasure flight with Westair Flying Services at Blackpool Airport and many more!

MUSIC

Our favourite musicians will be performing at the Beer Festival (please note that all timings are approximate).

**Friday 6th September from 6pm –
Jon Brindley**



**Saturday 7th September from 9pm
The Coustics**



**Sunday 8th September from 5pm –
Cartwright**



Cathy's Quirky Paintings

~ original acrylic paintings by Cathy Daniels ~



cathy_daniels@hotmail.co.uk

come and visit Cathy's stall
at the Show



Cathy Daniels



WE DETECT TO PROTECT

D.tec International Limited provide drug and alcohol testing services for safety critical employees, as well as all 43 police forces in England and Wales

www.dtecinternational.com



Mrs Mop Cleaning Services

What can we do for you?

- Daily, weekly, fortnightly, or one off cleans
- Quality work at competitive prices
- Provide mature and friendly staff
- Do your ironing in your own home
- Arrange schedules to fit in with you

4, Whinbrick Cottages, Blackpool Road,
Westby, Preston, PR4 2RJ

Telephone:

Office: 01772 673156
Mobile: 07834 524 960

Flaming Logs



call Robert Isles
on 07939 574 519 or 01253 836 228



Established since 1980

J.E. HARRISON BUILDERS (KIRKHAM) LTD.

FOR ALL YOUR BUILDING NEEDS

J.E Harrison Builders have been trading for 35 years and throughout that time has provided a quality personal service to all its clients, both private cutomers and public authorities.

- Extensions
- Alterations & refurbishment
- Design & New Builds
- Kitchens & Bathrooms
- Garages/Conversions
- External Works
- Roofing Works

T : 01772 684489

F: 01772 671486

Registered Office:

Builders Yard, 66 Marsden Street, Kirkham, Preston,

PR4 2TH

Email : admin@jeharrison.co.uk

www.jeharrison.co.uk

